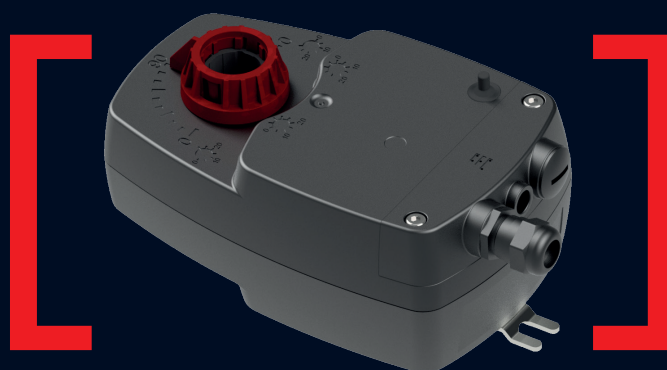


# PICO

The Bridge between Industrial  
and Building Services Engineering

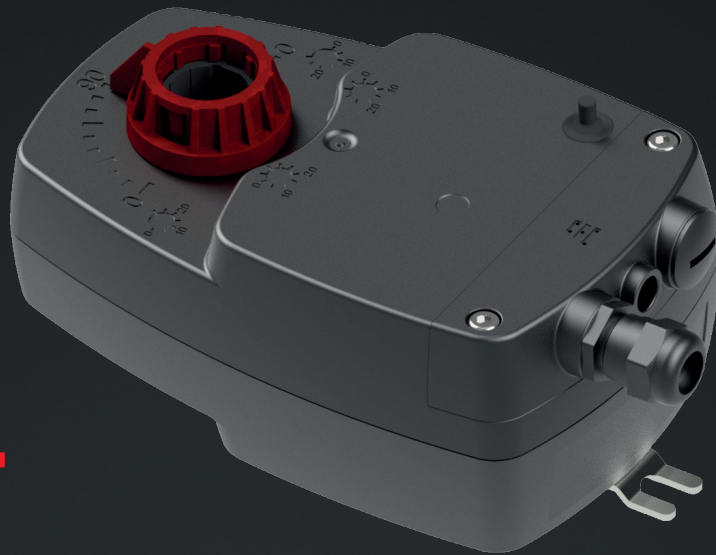


**PICO**

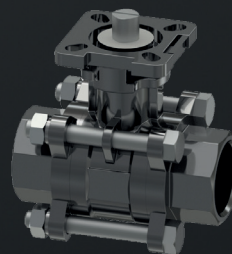
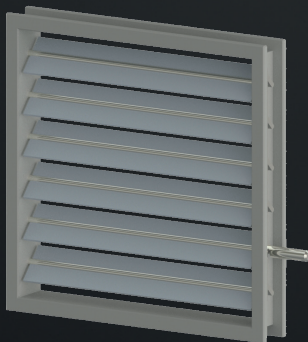
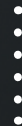
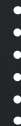
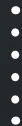
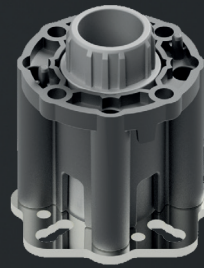
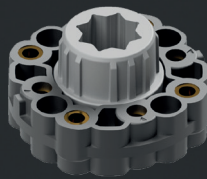
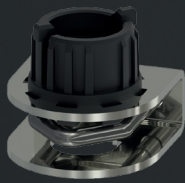
Product Catalogue

[www.stellantriebe.de](http://www.stellantriebe.de)

PICO



Adaptors



Industrial valves



# FIELDS OF APPLICATION

The choice is yours



Animal barn automation



Greenhouse technology



Climate control & ventilation plants



Boiler plants



Painting lines



Multi leaf dampers



Industrial furnaces



Industrial valves



Building management systems

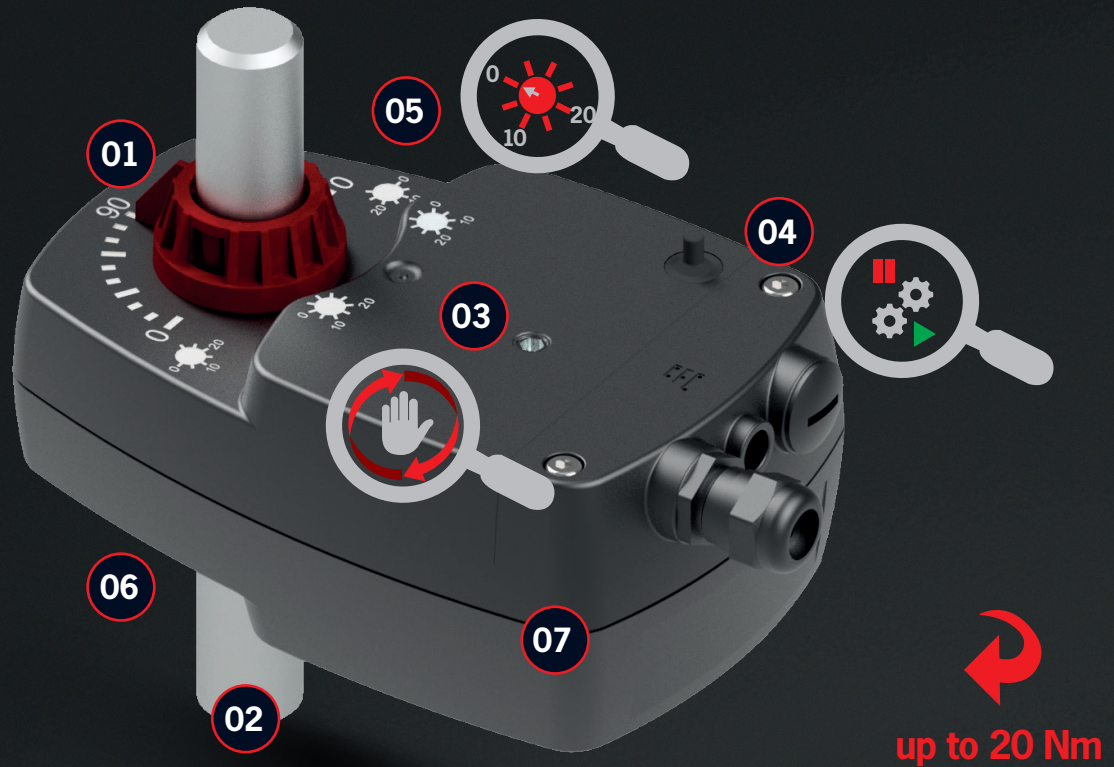
## **PICO** builds bridges between industrial and building technology

The new ARIS **PICO** project actuator is a fully developed modular system for a large field of applications, making the actuator the perfect choice for many applications. The great variety of possible combinations enables the customer to adapt the actuator cost-effectively to any particular application. Furthermore, similar to the actuator series Nano and Tensor, there are available many special features for modular installation in actuators, expanding the functionality of the **PICO**. As project actuator, **PICO** is available in customized versions for particular requirements or ex stock in Standard configuration.



## OVERVIEW

### of special features



**01**  
Mechanical  
position indicator

**04**  
Gear disengagement  
(optional)

**07**  
Robust, glass fiber  
reinforced housing

**02**  
Shaft feedthrough

**05**  
Adjustable auxiliary  
switch &  
rotation angle limit  
(optional)

**03**  
Manual setting shaft  
(optional)

**06**  
Customized  
adaption



# MODULAR DESIGN

For optimal adaption to your application

## Auxiliary switch

To retrieve max. 2 definable additional items (optional)



## Rotation angle limit

to limit the rotation angle of the actuator (optional)



BLDC-Motor  
for reliable operation

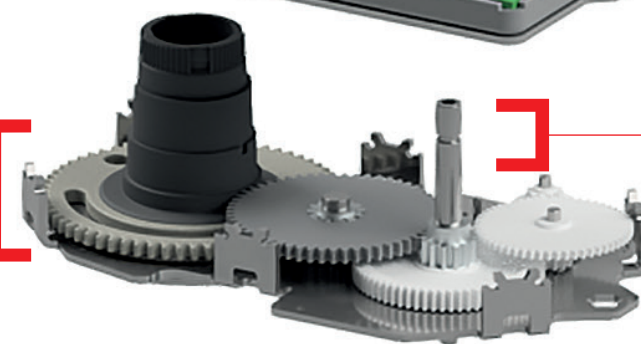
Gear  
disengagement  
Disengaging motor & transmission

## Potentiometer (optional)



## Mechanical end stop

by limit stop in gear plate (optional)

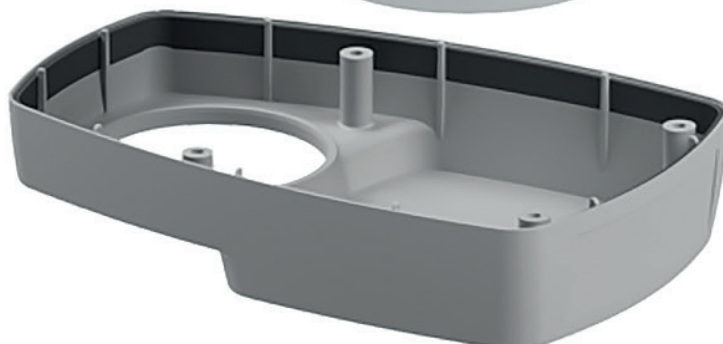


Manual adjustment  
for manual position adjustment (optional)

Hybrid gear  
for noise-damped and low-vibration operation

## Spring return

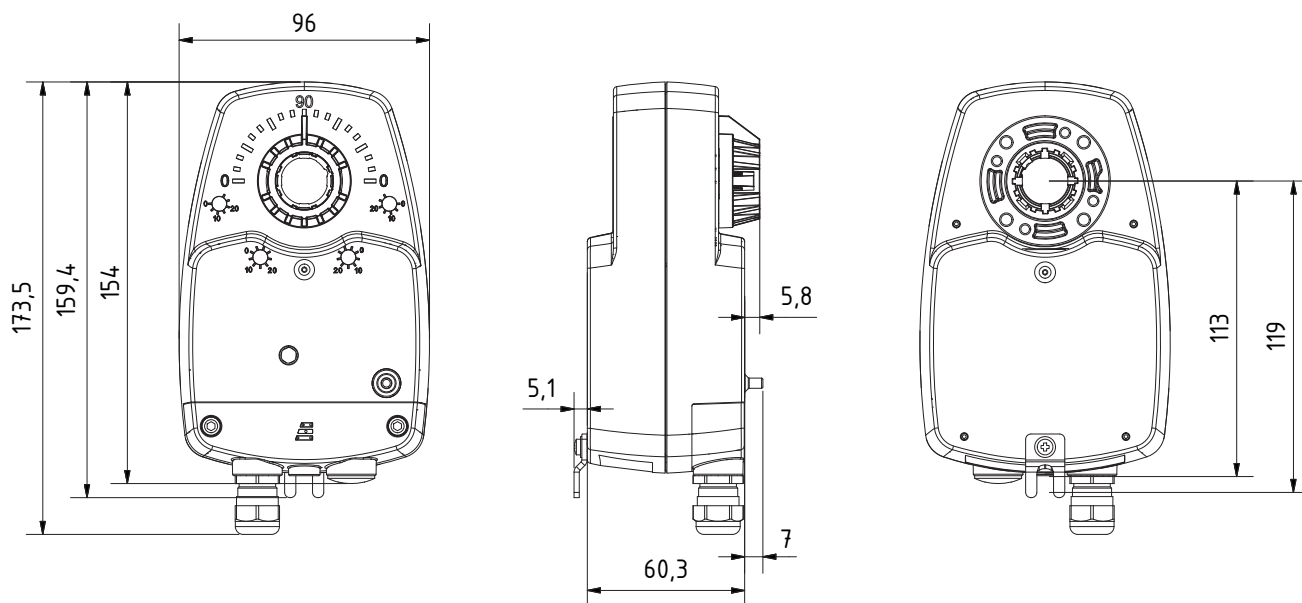
Safety function in case of de-energized actuator





# TECHNICAL DATA

## PICO



### TECHNICAL DATA PICO

<b>Protection class</b>	IP 65
<b>Ambient temperature</b>	-30° C...+50° C
<b>Body</b>	Glass fiber reinforced (GFR) polycarbonate
<b>Gear</b>	Hybrid gear with lifetime lubrication
<b>Position indicator</b>	Mechanical
<b>Supply voltage</b>	96-265V AC oder 24V DC selectable
<b>Extra switches</b>	Optional
<b>Potentiometer</b>	Mechanical (max. 90° resolution, optional)
<b>Rotation angle</b>	90°
<b>Connection</b>	Terminal connection or connection cable, selectable
<b>Adaption</b>	Optionally selectable
<b>Maintenance</b>	Maintenance free
<b>Activation</b>	Selectable: 2-point 3-point 0-10V (2-10V) as input & output 0-20mA (4-20mA) as input & output

<b>Torque (Nm)</b>	5	10	15	20
<b>Actuating time (s/90°)</b>	15	30	45	60



# PICO

## Optional adaptors



### Spacer mounting kit Z10

- > Square drive SW14 for mounting on F03/F04 flanges
- > For 14 mm inner square/star
- > Smaller sizes - see reducers



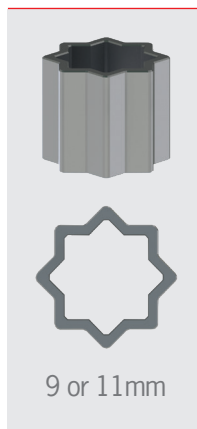
### Spacer mounting kit Z20

- > For mounting on F03/F04/F05 flanges
- > For 14 mm inner square/star
- > Smaller sizes - see reducers



### Clamping adapter

- > Adapter for use with shaft feedthrough
- > Clamping area Ø 8...20 mm
- > Wrench size SW 8...14 mm



### Reducers

- > For positive-locking connection with 9 or 11 mm inner square/star




### Valve adaptor

- > For connection of valves

## DISCLAIMER

Despite most careful verification of all data contained in this brochure, we do not assume any liability for possibly inaccurate or incomplete details. Technical modifications reserved. Disclosure and reproduction of this document, exploitation and passing on of its contents is prohibited, unless specifically permitted. Representations may differ from actual scope of supply.





Your specialist for up-to-date  
drive and control technology  
for more than 40 years

ARIS Stellantriebe GmbH  
Rotter Viehtrift 9  
D-53842 Troisdorf

T. +49 2241 25186 - 0  
F. +49 2241 25186 - 99  
aris@stellantriebe.de

[www.stellantriebe.de](http://www.stellantriebe.de)

Rev.01  
2018